



295P-72

POLY CRYSTALLINE MODULE 275-295 Watt

Universal Solar introduces a brand-new line of high performance modules in wide application.

KEY FEATURES



Our solar cells offer high conversion efficiency to ensure the highest quality

Our high performing modules have an industry low tolerance of 0~+3% (optional)

The modules can withstand high wind-pressure, snow loads and extreme temperatures

Passed IEC 5400 Pa mechanical loading test

QUALITY & SAFETY

Industry leading power output warranty
(12 years/90%, 25 years/80%)

10-year warranty on materials & workmanship (optional)

ISO 9001:2008 (Quality Management System) certified factory

IEC61215, IEC61730 certified products



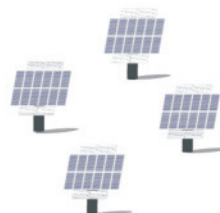
APPLICATIONS



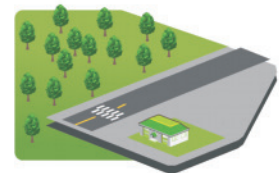
On-grid residential roof-tops



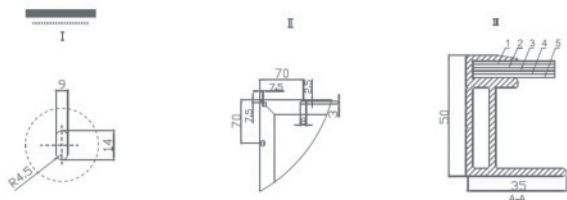
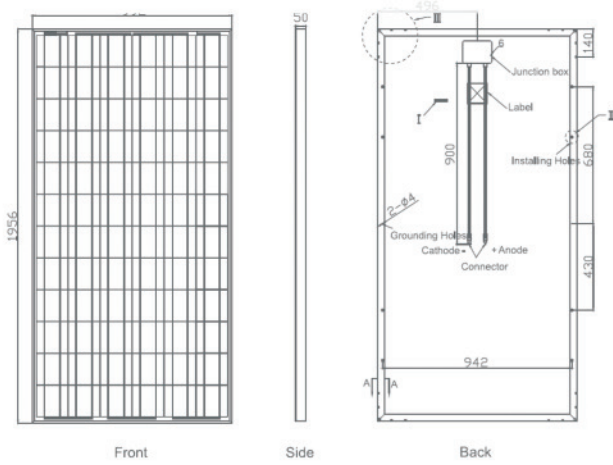
On-grid commercial/
industrial roof-tops



Solar power plants



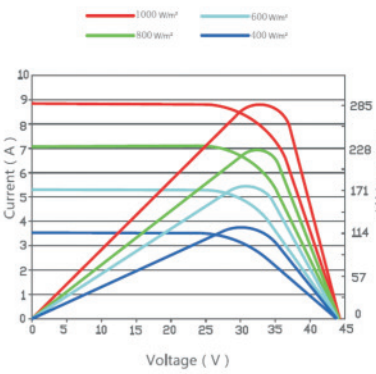
Off-grid systems



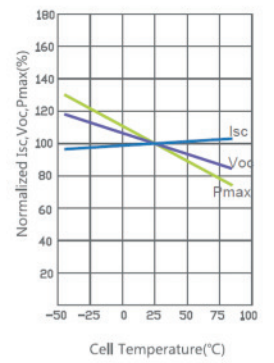
Packaging Configuration

(Two boxes + 4pcs addition module = One pallet)
 20 pcs/box, 44 pcs/pallet, 484 pcs/40'HQ Container

Current-Voltage & Power-Voltage Curves (285W)



Temperature Dependence of Isc, Voc, Pmax



Mechanical Characteristics

Cell Type	Poly-crystalline 156×156mm (6 inch)
No. of cells	72 (6×12)
Dimensions	1956×992×50mm (77.01×39.06×1.97 inch)
Weight	27.0 kg (59.5 lbs.)
Front Glass	4.0mm, High Transmission, Low Iron, Tempered Glass
Frame	Anodized Aluminium Alloy
Junction Box	IP65 Rated
Output Cables	TÜV 1×4.0mm² / UL 12AWG , Length:900mm

SPECIFICATIONS

Module Type	275P	280P	285P	290P	295P
Maximum Power at STC(Pmax)	275Wp	280Wp	285Wp	290Wp	295Wp
Maximum Power Voltage (Vmp)	35.4V	35.5V	36V	36.4V	36.8V
Maximum Power Current (Imp)	7.77A	7.89A	7.92A	7.97A	8.02A
Open-circuit Voltage (Voc)	44.4V	44.5V	44.7V	44.9V	45.2V
Short-circuit Current (Isc)	8.70A	8.81A	8.85A	8.89A	8.95A
Module Efficiency(%)	14.17%	14.43%	14.69%	14.95%	15.20%
Operating Temperature(°C)	-40°C~+85°C				
Maximum system voltage	600V (UL) /1000V (IEC) DC				
Maximum series fuse rating	15A				
Power tolerance	0~+3% (optional)				
Temperature coefficients of Pmax	-0.45%/°C				
Temperature coefficients of Voc	-0.27%/°C				
Temperature coefficients of Isc	0.05%/°C				
Nominal operating cell temperature (NOCT)	45±2°C				

STC: Irradiance 1000W/m² Module Temperature 25°C AM=1.5

* Power measurement tolerance: ± 3%



Universal Solar AG
 Friedrich-Ebert-Str. 15
 52531 Germany

Phone: +49 2451 484 55 23
 Fax: +49 2451 484 55 11

E-Mail: info@universal-solar.de